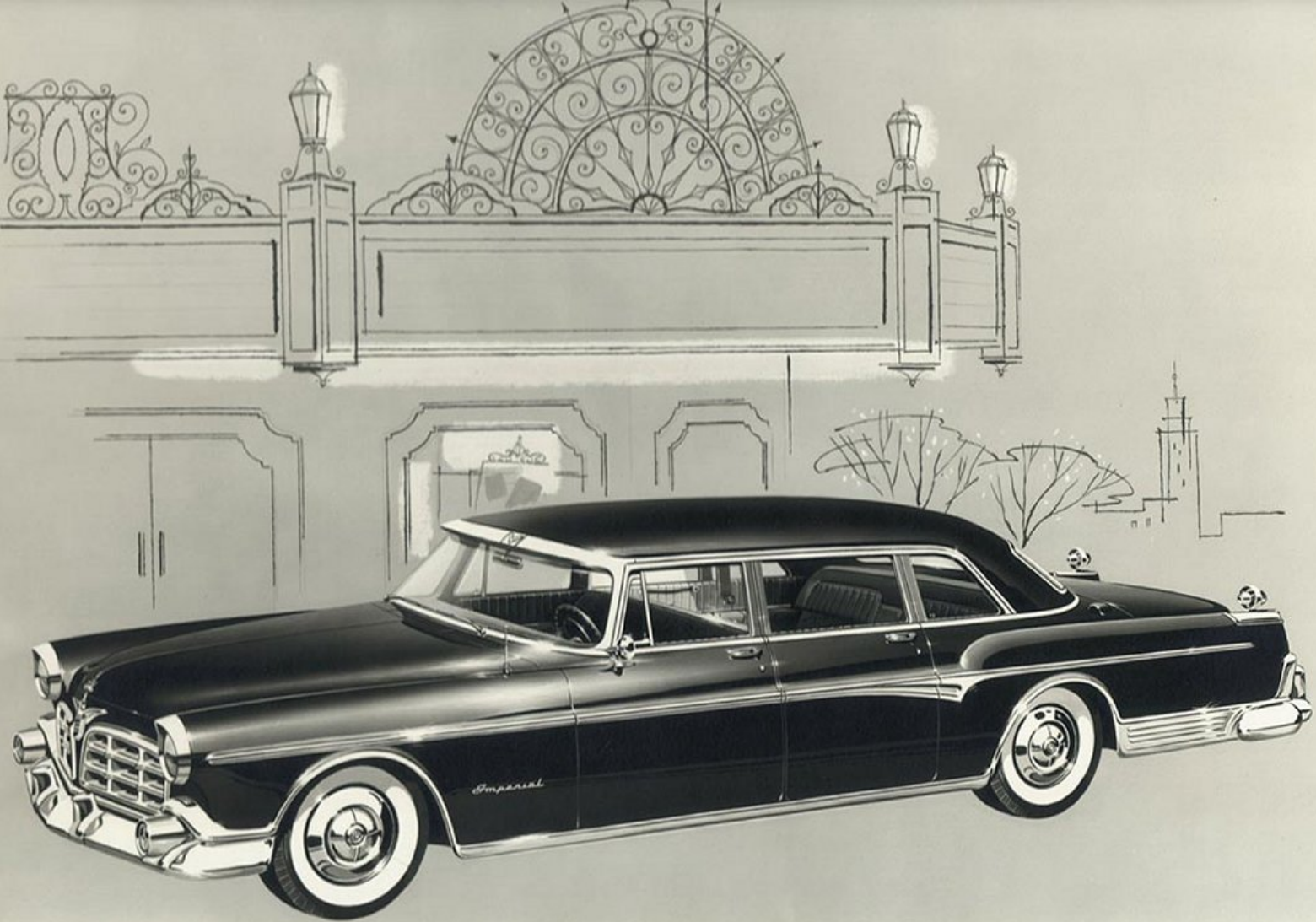




CROWN

IMPERIAL









# Crown Imperial Specifications

**BODY STYLES** — 8 Passenger Sedan and 8 Passenger Limousine.

**ENGINE** — FirePower V-8 High Compression with Hemispherical Combustion Chambers. 250 horsepower at 4600 rpm. Torque, 340 ft. lbs. at 2800 rpm; Compression ratio, 8.5 to 1; Bore, 3.81 in.; Stroke, 3.63 in.; Piston Displacement, 331.1 cu. in.; Full Pressure Lubrication; Exhaust Valve Seat Inserts; Waterproof Ignition; Silicon chromium steel intake and exhaust valves; Oil Bath Air Cleaner; Full-Flow Oil Filter.

**FUEL SYSTEM** — Four barrel carburetor with vacuum controlled secondary draft system. Integral automatic choke. Oilite Fuel Filter in gas tank. Capacity, 20 gallons.

**COOLING SYSTEM** — Thermostatic by-pass control. Four bladed fan (six bladed with Air Conditioning). Fin and Tube Radiator Core. Full length water jackets around cylinders. Capacity, 25 quarts.

**ELECTRICAL SYSTEM** — 25 amp. capacity generator. 13 Plate, 65 amp. hr. battery, 12 volt system. 14 mm "Long Reach" Resistor Spark Plugs. Sealed-Beam headlights; Backup lights; Dual Directional Signals; Map light; Solenoid engaged ignition key starter switch; Electric Window Lifts; Electric 2-way front seat adjustment (Sedan only); Electric two-speed Windshield wipers; Cigar lighters, 1 in front and 2 in rear; Electric Clocks, 1 in front and 1 in rear; Rear Dome Light with automatic switch; Glove Compartment light; Hand Brake Flasher Light; Rear License Plate Light; Luggage Compartment Light; Overhead Light in front compartment; Reading Light in rear compartment; Electrically operated glass partition

between front and rear compartments (Limousine only); "Music Master" Radio with rear compartment speaker.

**TRANSMISSION** — PowerFlite fully automatic, torque converter. Ratio 2.6 to 1 combines with planetary ratio to give 4.47 to 1 gear ratio at breakaway. Forward shift from 15 to 65 m.p.h. Downshift at 11 m.p.h.

**SUSPENSION** — *Front* — Independent front wheel suspension with Amola steel helical coil springs Oriflow Shock Absorbers mounted inside each coil spring. *Rear* — Tapered leaf springs with interliners. Straddle-mounted, direct acting Oriflow Shock Absorbers.

**STEERING** — Full-Time Coaxial Power Steering with symmetrical idler arm steering linkage. From full right to full left with 3.75 turns of steering wheel.

**BRAKES** — Chrysler Disc Brakes with self adjusting, fade-free molded asbestos linings. Chrysler Easi-Lock Independent Parking Brake. Parking Brake handle mounted on the Instrument Panel with red flasher warning signal on dash above handle.

**WHEELS AND TIRES** — Safety Rim Wheels with Tubeless White Sidewall Tires, 6 ply, 8.90 x 15. Chrome Stainless Steel Wheel Covers.

**DIMENSIONS** — Wheelbase, 149.5 in. Tread — front, 61.69 in.; rear, 60.75 in. Over-all Length, 242.5 in.

**REAR AXLE RATIO** — 3.54.

**OPTIONAL AT EXTRA COST** — Chrysler Airtemp Air Conditioning; Solex Glass; Chrome Wire Wheels with Tube Tires.

*All Specifications and Prices Subject to change without notice.*