



CROWN
IMPERIAL
LIMOUSINE

CHRYSLER CORPORATION



Chrysler Corporation is proud to present this latest version of its international classic — the Crown Imperial Limousine. A small number of this "limited edition" vehicle will be custom-created to exemplify the finest expression of The Forward Look.

The renowned firm of Ghia of Italy brings to bear their heritage of painstaking hand craftsmanship in the modification of a standard LeBaron Imperial shipped to Genoa from Detroit. Now lengthened and richly appointed, the Crown Imperial Limousine embarks at Torino for its voyage to Chrysler Manhattan or, perhaps, to London, Athens or Melbourne.

A review of the specifications listed in this brochure will reveal the full scope of the engineering excellence and luxurious appointments of this graceful and dignified limousine. Comfort, convenience and safety are paramount

EXTERIOR STYLING

In the Crown Imperial Limousine, the styling theme of the Imperial line has been set against a background of sweeping length. Front end appearance is distinguished by a grille of unique texture, and refinement of detail has been executed in medallions, taillights, and other ornamentation in keeping with the quiet dignity of this custom-crafted automobile.

The doors extend into the curve of the roof line and blend smoothly with its contour to add an original styling note and provide generous door openings for ease of entry and exit.

The distinctive stepped rear canopy is covered in black leather to match the black exterior paint on the limousine.



INTERIOR STYLING

Two unique designs of interior trim arrangement have been specially created for the Crown Imperial Limousine. Available in either gray or beige, the designs are executed in the finest quality broadcloth. Glove grade milled leather, cabinet woods, and tastefully styled metal mouldings are used to accent the basic design. Sheared mouton carpeting in matching gray or beige covers the passenger compartment floor. Eight passenger seating is provided by jump seats which fold flush with the compartment partition when not in use.

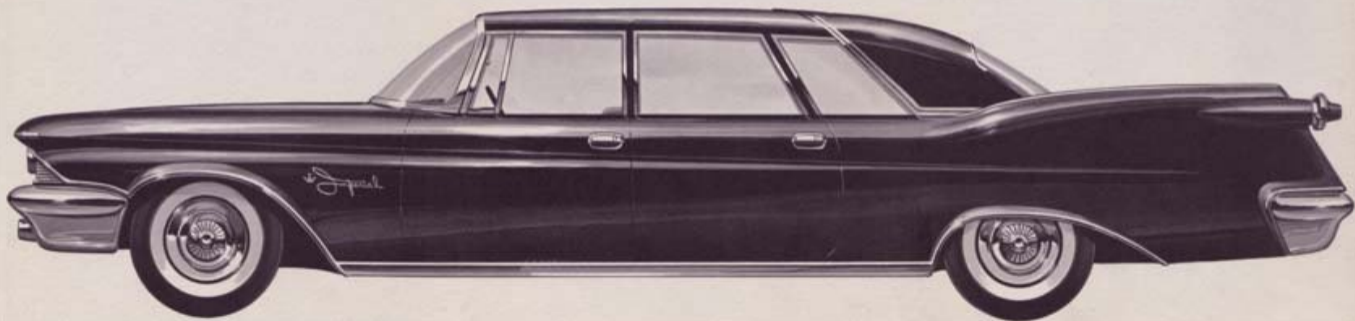
All chauffeur compartments are finished in narrow-piped black leather, and the floor is covered with fine nylon carpeting in matching black. Luggage compartments, too, are completely carpeted.



C H R Y S L E R



CROWN IMPERIAL LIMOUSINE



In keeping with Chrysler Corporation's policy of constant product improvement, certain minor variations from the designer's original conceptions reproduced in this brochure may be observed in cars of this limited series—as made necessary by the availability of special materials or the application of the techniques of hand craftsmanship.