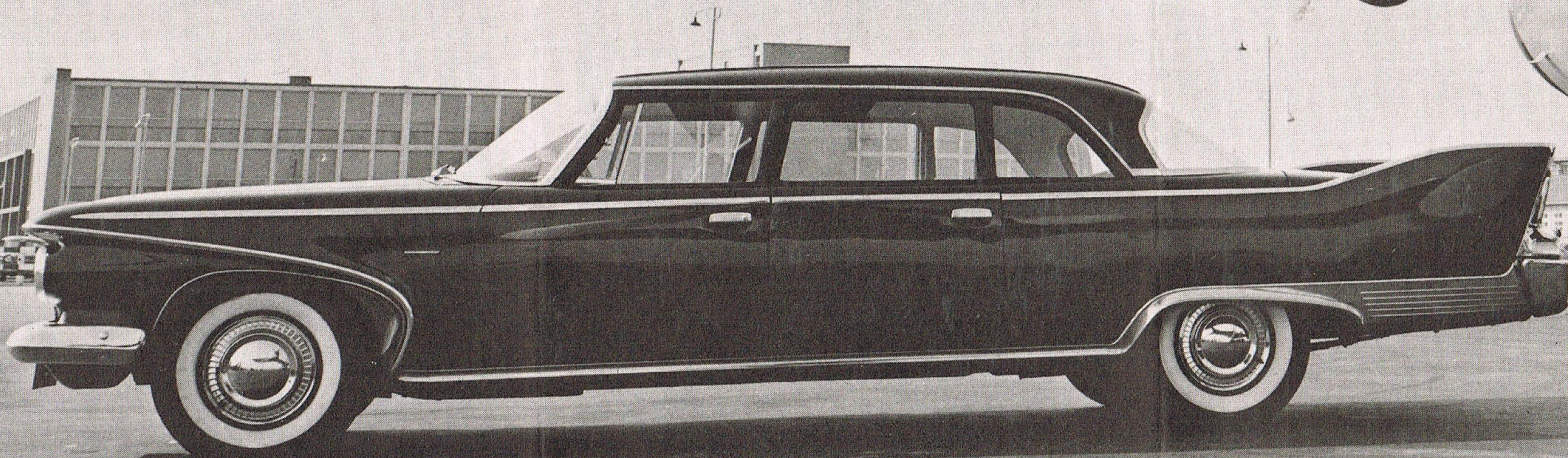


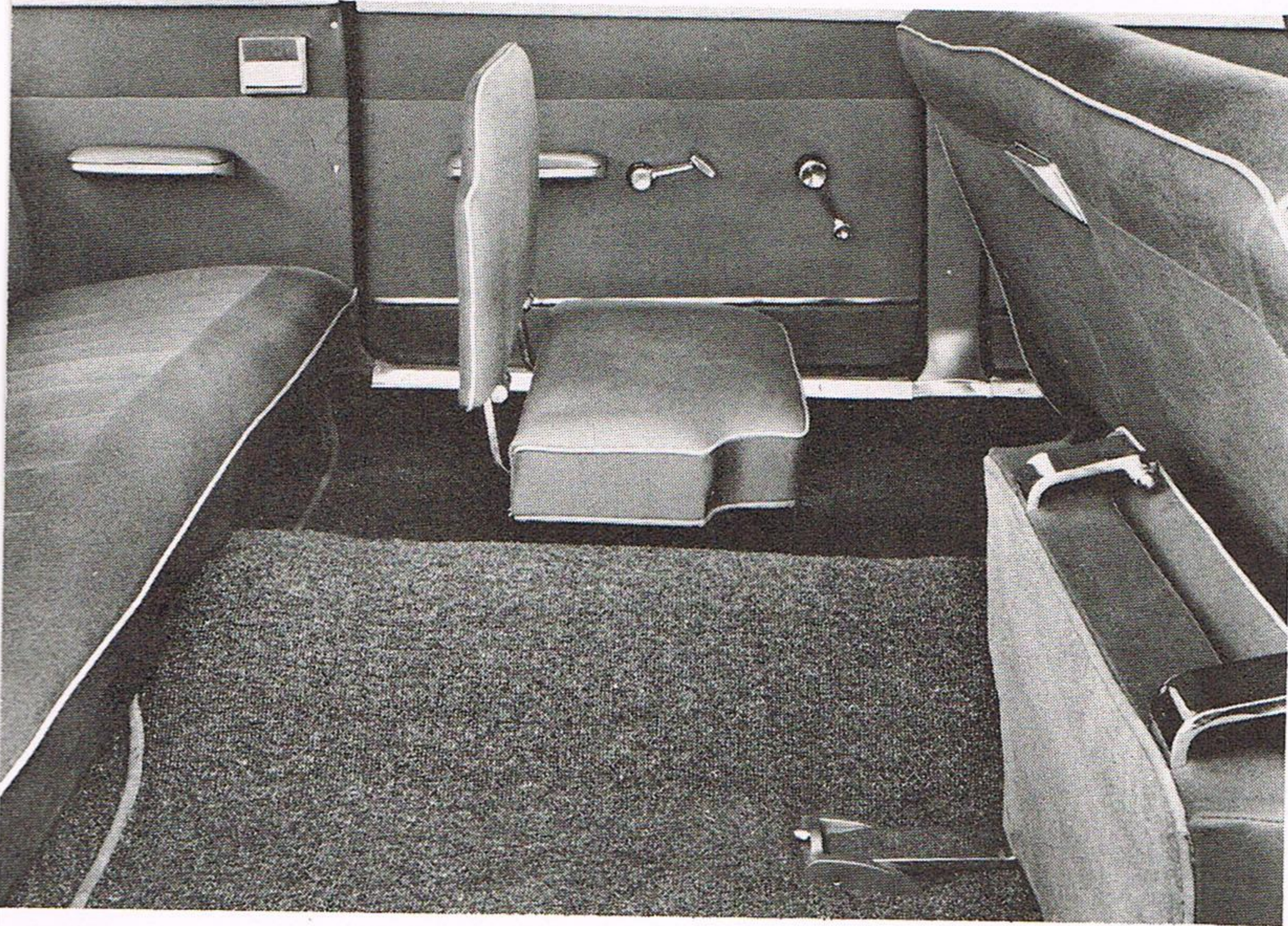
8 passenger  
**CORONADO**



The custom styling of this car will complement your present equipment.

There are no service problems that cannot be handled in any of the thousands of Chrysler or Plymouth dealers throughout the United States using standard factory parts.

The number of these cars available for export to the United States is limited and we are sure you can understand why we cannot accept trade-ins at this low price.

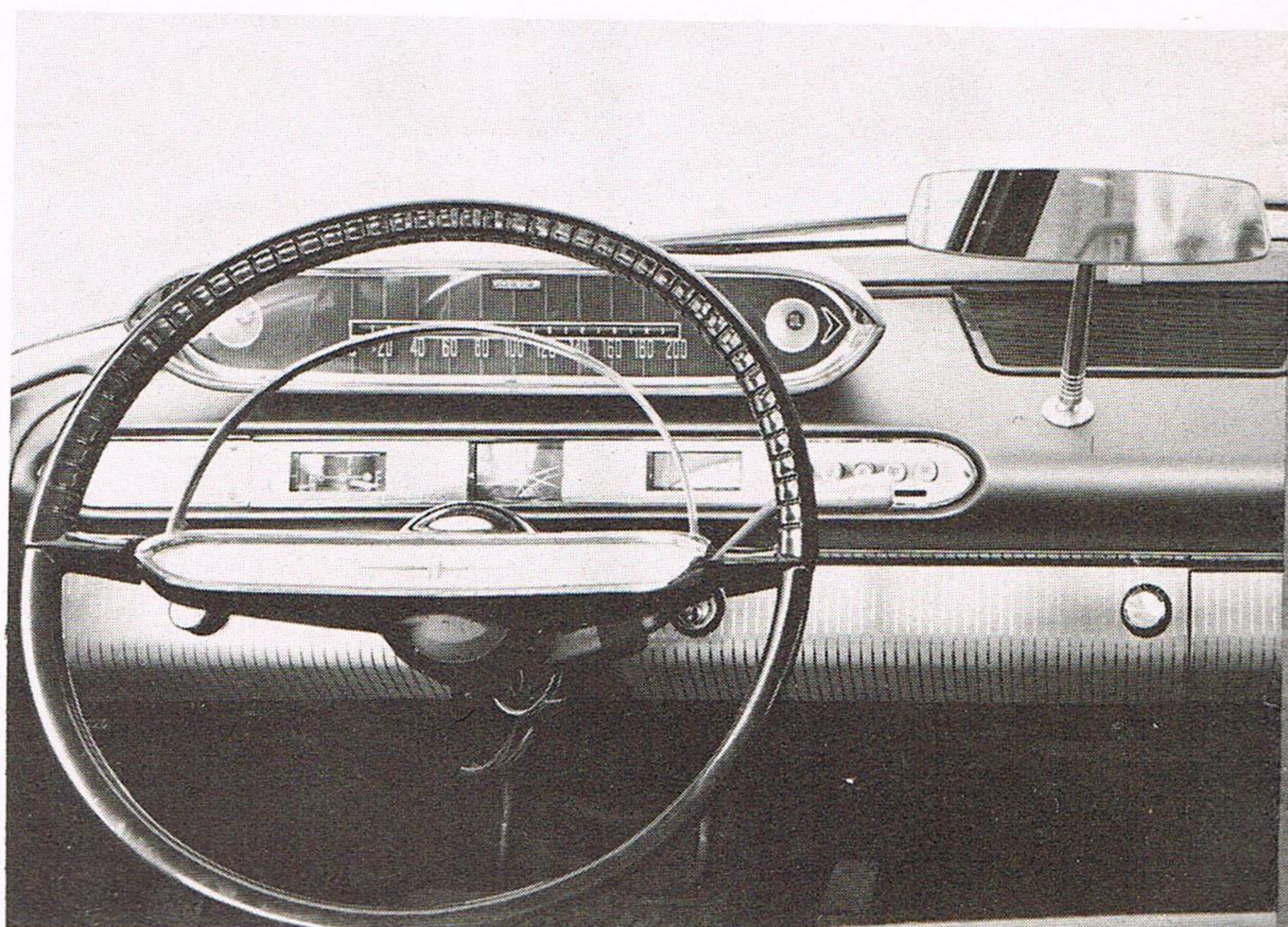


Funeral directors now using these eight-passenger limousines have high praise for the economy, comfort, styling and well put-together construction throughout. They have found that there is more power than they can ever use for funeral work—plus power brakes and power steering.

The rear seating compartment has more than normal leg room for passenger comfort. The wide, deeply upholstered, auxiliary seats can be folded forward when not in use. The doors are wide, so that you can step through, rather than squirm through, which makes for easy family loading.

Here is a car you have all been waiting for, for less than half the price of other eight-passenger limousines.

This car has a Chrysler-engineered chassis and engine. Skilled European craftsmen have hand-crafted this beautiful custom-built body. There were no hurried mass production line techniques used in the production of this car. Close and careful attention was given to every detail of construction to produce this prestige car.





*All prices, specifications and equipment are subject to change without notice and responsibility to the Company.*

*Prices quoted as of this date including customs and import duties, F.O.B. Port of Entry.*



# GENERAL SPECIFICATIONS

<b>ENGINE</b>	<p><b>6 cylinder:</b> overhead valves in line—30° inclined—bore and stroke 3.40" x 4.125"—piston displacement 225 cu. in.—compression ratio 8.5:1—maximum brake horsepower 145 at 4000 RPM—maximum torque 215 ft. lbs. at 2800 RPM.</p> <p><b>8 cylinder:</b> V8 overhead valves—bore and stroke 3.91" x 3.31"—piston displacement 318 cu. in.—compression ratio 9.0:1—maximum brake horsepower 230 at 4400 RPM—maximum torque 340 ft. lbs. at 2400 RPM.</p>												
<b>FUEL SYSTEM</b>	Fuel filter in gas tank—automatic choke—single carburetor—gas tank 20 U.S. gallon capacity—mechanical fuel pump.												
<b>COOLING SYSTEM</b>	High capacity radiator—thermostat—pressure vent radiator cap—cooling system capacity 15 QT. (including heater).												
<b>LUBRICATION</b>	Full pressure system—rotor type oil pump—full flow oil filter with replaceable element—crankcase capacity 6 cyl. 4 QT. 8 cyl. 5 QT. 6 QT with oil filter replacement.												
<b>ELECTRICAL SYSTEM</b>	Battery: 75 amp/h.—12 volt—35 amp. alternator—voltage regulator—lighting circuit protected with circuit breaker—resistor type sparkplugs—dual headlamps.												
<b>CLUTCH</b>	<b>6 cylinder</b> only—dry disc single plate—10" diameter.												
<b>TRANSMISSION</b>	<p><b>6 cylinder</b>—heavy duty 3 speed manual shift, 2nd and 3rd gears synchronized—ratios: 1st 2.50, 2nd 2.68, 3rd 1.00—reverse 3.20.</p> <p><b>8 cylinder</b>—fully automatic torqueflite—ratios: 1st 2.45, 2nd 1.45—drive 1.00—reverse 2.00.</p>												
<b>REAR AXLE</b>	Semi-floating hypoid axle—ratios: 6 cylinder 3.91:1, 8 cylinder 3.54:1.												
<b>FRAME</b>	Double channel—Arc welded—boxtype—stubframe in front—unitized body construction.												
<b>SUSPENSION</b>	Heavy duty front torsion bars with ballpoint suspension—Sway eliminator bar—heavy duty semi-elliptic rear springs—shock absorbers—firm ride front—heavy duty rear.												
<b>STEERING</b>	Constant control integral power steering—turning diameter: 55 Ft.												
<b>WHEELS AND TIRES</b>	Steel disc wheels with safety rims—rim size 15 x 6.00—7.60 x 15—6 ply Goodyear tubeless white side wall.												
<b>BRAKES</b>	12" Hydraulic brakes with vacuum brake booster—-independent parking brake with separate drum on propeller shaft behind transmission.												
<b>PROPELLER SHAFT</b>	Two piece tubular shaft with 3 cross type universal joints and support.												
<b>STANDARD EQUIPMENT</b>	Airfoam seat cushion front and rear—arm rests front and rear doors and rear side panels—ash trays: 1 in instrument panel, 1 in back of front seat, 1 in each side panel—coat hooks—safety handle—cigar lighter—steering wheel deluxe—heater and defroster—directional signals—dual horns—back up lights—gas tank locking cap—front fender shield cover—stone shields—wheel covers—windshield wipers variable speed and windshield washers—front bumper guards—air cleaner—crankcase ventilator and air cleaner—tool kit export type.												
<b>INSIDE TRIM</b>	All cloth—gray.												
<b>DIMENSIONS</b>	<table border="0"> <tbody> <tr> <td>Wheelbase—142"</td> <td>Interior width frt. 60.4"</td> </tr> <tr> <td>Overall length—235.4"</td> <td>rr. 59.8"</td> </tr> <tr> <td>Overall width—78.6"</td> <td>Seat depth frt. 18.1"</td> </tr> <tr> <td>Overall height—59.4"</td> <td>rr. 17.2"</td> </tr> <tr> <td>Front tread—60.9"</td> <td>Auxiliary—13.3"</td> </tr> <tr> <td>Luggage compartment capacity 29.4 cu. ft.</td> <td></td> </tr> </tbody> </table>	Wheelbase—142"	Interior width frt. 60.4"	Overall length—235.4"	rr. 59.8"	Overall width—78.6"	Seat depth frt. 18.1"	Overall height—59.4"	rr. 17.2"	Front tread—60.9"	Auxiliary—13.3"	Luggage compartment capacity 29.4 cu. ft.	
Wheelbase—142"	Interior width frt. 60.4"												
Overall length—235.4"	rr. 59.8"												
Overall width—78.6"	Seat depth frt. 18.1"												
Overall height—59.4"	rr. 17.2"												
Front tread—60.9"	Auxiliary—13.3"												
Luggage compartment capacity 29.4 cu. ft.													

## GENEVA IMPORTS

1346 LINCOLN STREET

DENVER, COLORADO